

## 7.1 Institutional Values and Social Responsibilities

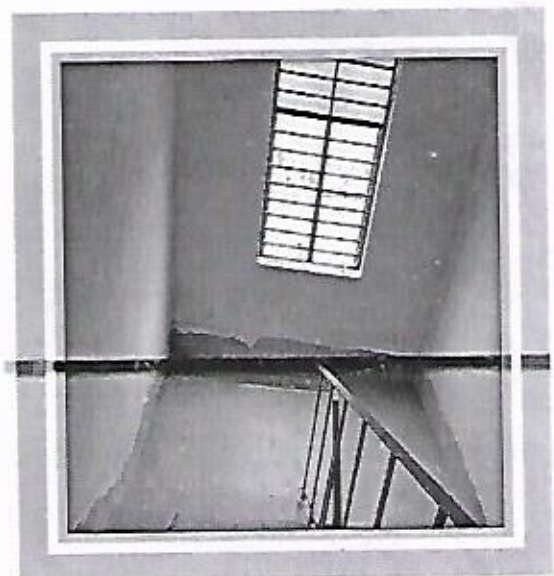
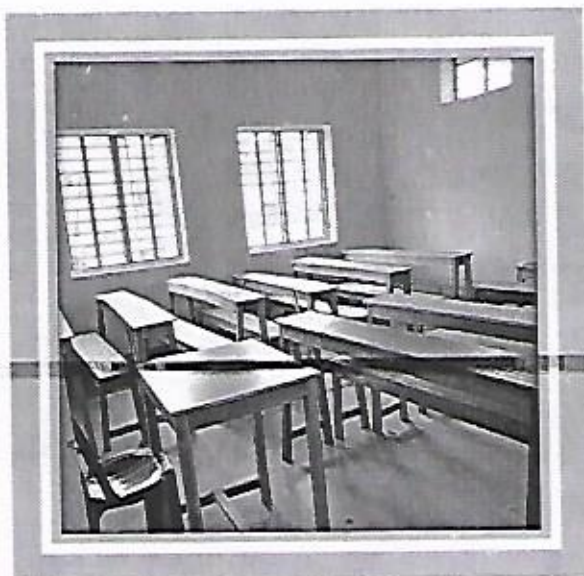
### 7.1.2 Environmental Consciousness and Sustainability and Divyangjan Friendly Initiatives

The Institution has facilities and Initiatives for

#### Energy Conservation features of the institution

The institution has facilities for alternative sources of energy and energy conservation measures.

- There are Sunny Airy Classrooms, Balcony, and Staircases in our college.



- At the end of each class, students will turn off classroom fans and lights before leaving. Also separate seating practice is made for students regularly. It is an important best practice for us.



**At the Moment of Practical Session in the Class Room**



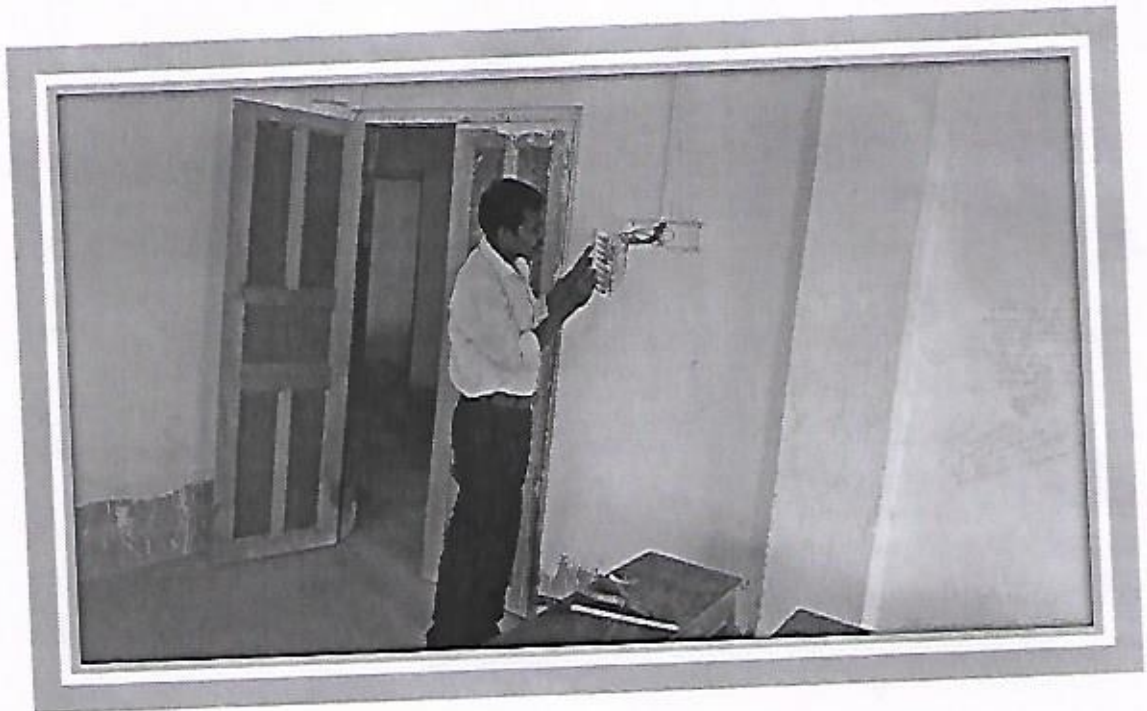
**Separate Seating in the Class Room**



► LED bulbs are used everywhere in the college to reduce the current consumption.



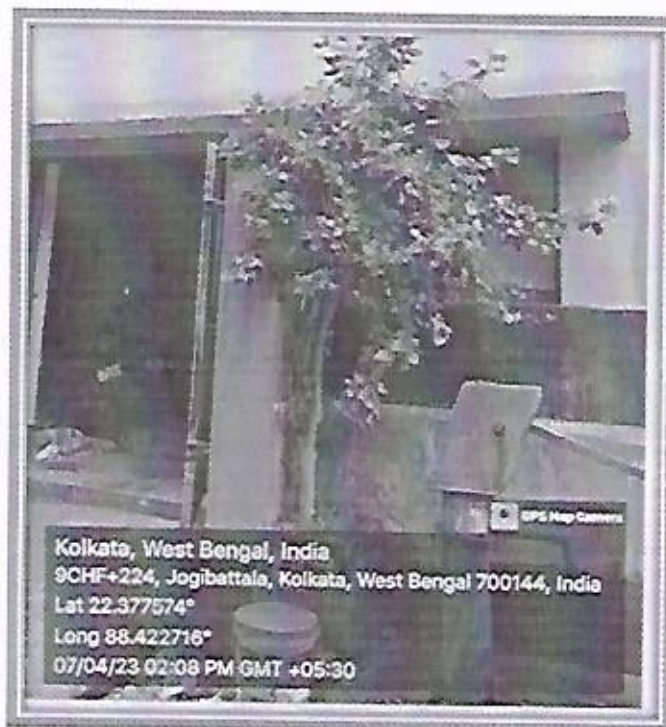
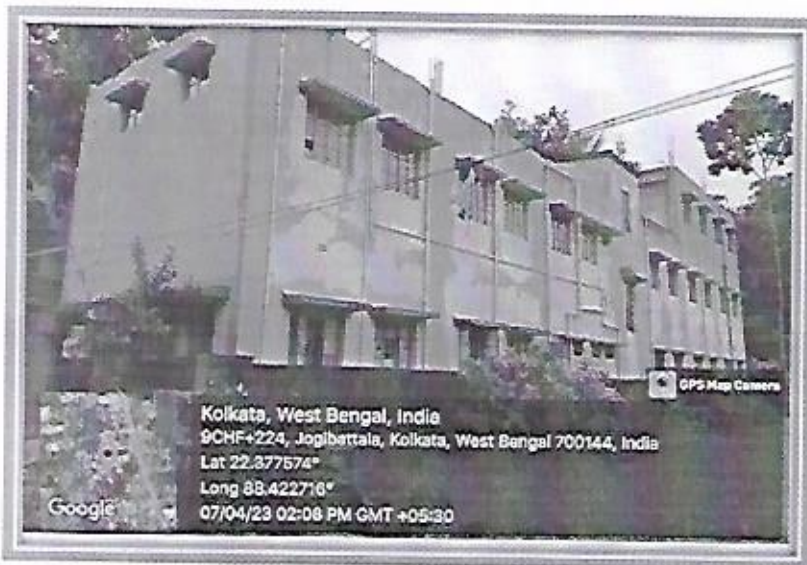
► Regular maintenance of generator & electrical equipment.



► LED bulbs are used everywhere in the college to reduce the current consumption.



# Green campus



# RAMP



## Alternate sources of energy





## Daily Use Dustbin



# WATER CONSERVATION



## Solid Waste Management Report:

### NECESSITY AND IMPORTANCE:

The accumulation of wastes in different forms causes serious environmental hazards. There are different types of waste disposed of in the college for which there is a proper system functioning. Our college follows the proverbial saying, 'Prevention is better than cure', meaning thereby, it is better to alleviate something hazardous or deleterious from happening than it is to deal with it before it gets cropped up and becomes intense. Therefore, we follow the dictum of 3Rs- Reduce, Reuse, and Recycle. From the health, hygiene, environmental, and aesthetic point of view, the college ensures proper disposal of waste generated on the campus. The following wastes are being disposed of by the college.

- I) Institute has applied the NO PLASTIC POLICY to minimize plastic waste. The use of plastic carry bags, cups, and laminated paper plates is prohibited on the campus. Students and staff are advised to bring cloth bags
- II) Waste like metals, glass, cardboard, newspaper, and stationery are systematically collected, segregated, and sold to vendors for its recycling
- iii) Single side used papers are reused for writing and printing in all departments.

The college adopts an almost paperless concept through the digitization of office procedures through electronic means via WhatsApp as a group, email, and Google Meet, thus, reducing paper based waste and reduce carbon dioxide emissions

- v) Large size dustbins are kept all over the campus for disposal of waste



## REPORT ON WATER CONSERVATION

Water scarcity is a growing concern, the only solution for which is water conservation. It is taken care of at different levels at Al Ameen Memorial Minority College.

Realizing that rainwater harvesting is imperative for future water needs, Al Ameen Memorial Minority College has set up a rainwater harvesting unit within the College campus.

The land of the college was identified for the Construction of a Deep Exploratory Well (Deep Tube Well) By Central Ground Water Board, Eastern Region & Division, Kolkata in hard rock areas of West Bengal and the work was completed successfully.

Regular maintenance is kept of taps, drainage, and water pipelines

To ensure a clean and safe potable water supply, water purifiers with reverse osmosis are in the main block.

The RO machines rejected water is then used for plants. The wastewater is carried out through the pipeline into the soffit.

There is a deep-water tank inside our college.

Best practices of the College include the strategies adopted for the conservation of water in and around the College premises:

Reducing evaporation losses and recharging groundwater by planting and maintaining trees. use of recycled water for gardening.

An active NSS Team and Eco Club with Staff coordinators, Students, and volunteers' chart various activities and programs to create awareness of environmental issues among students.

Continuous monitoring of water usage and misuse in the College under the leadership of college authorities.

Display boards for instilling alertness to conserve precious water resources are fixed near the water sources

